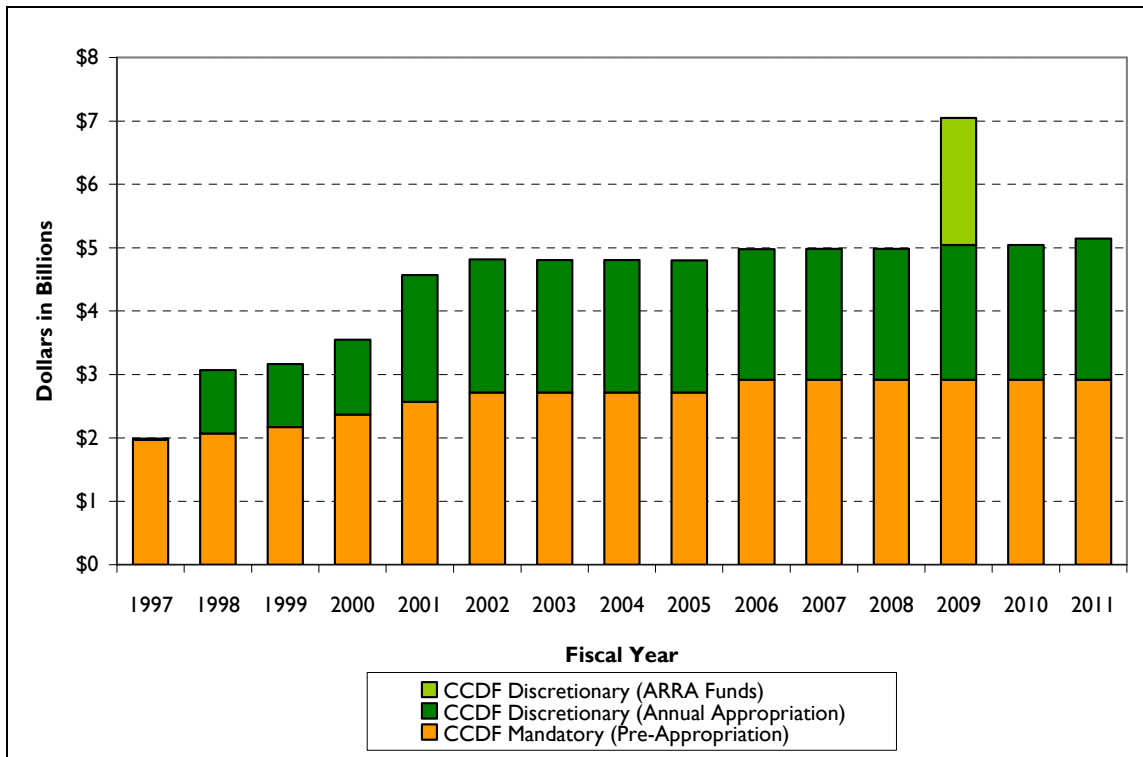


Figure 9-1. Federal Funding Appropriated to the CCDF, FY1997-FY2011
(nominal dollars in billions)



Source: Prepared by CRS based on data from the U.S. Department of Health and Human Services (HHS).

Notes: This chart looks at dollars appropriated to the CCDF and does not account for funding transferred from TANF. Total funding levels reflect rescissions and advance appropriations, where appropriate. What appears to be limited discretionary CCDF funding in FY1997 actually reflects a shift to advance appropriating of funds for the following fiscal year. The FY1997 appropriation law provided \$956 million for discretionary CCDF, with only \$19 million available immediately during FY1997, and the remainder available on Oct. 1, 1997 (the first day of FY1998). The significant increase in discretionary funding in FY2009 reflects supplemental funding in the amount of \$2.0 billion dollars, which was appropriated through the American Recovery and Reinvestment Act (ARRA, P.L. 111-5).